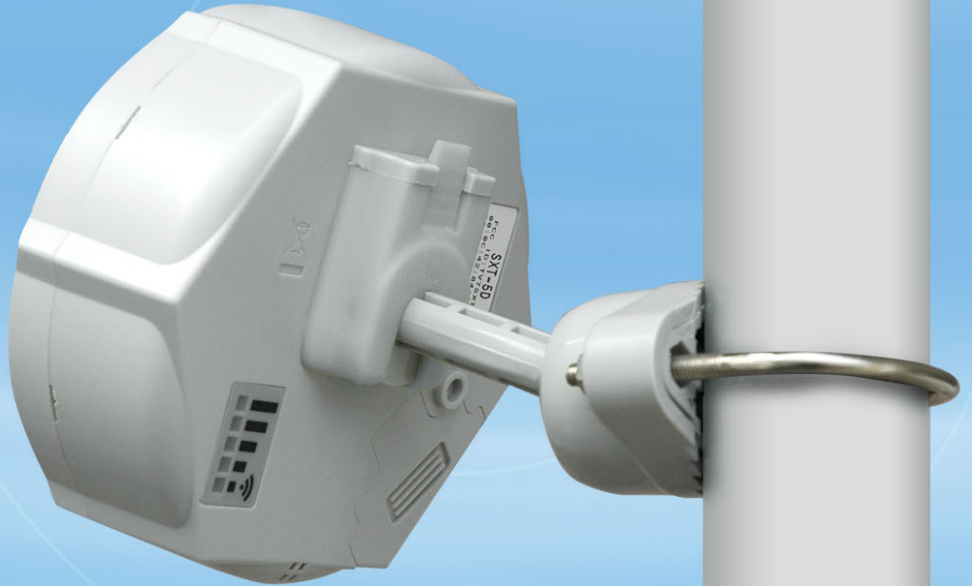


# NANO BRACKET™

SXT



## Product Datasheet



**NanoBracket™ SXT is ingenious mounting kit that enables simple, safe and fast installation of RouterBoard™ SXT on wall or pole.**

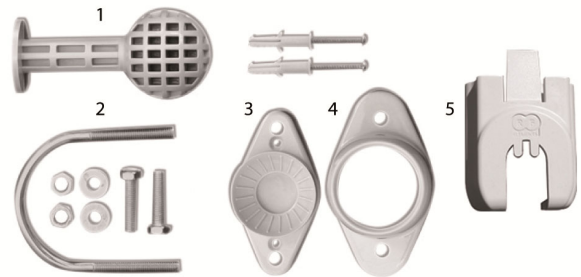
### Holder for RouterBoard™ SXT

NanoBracket SXT is holder developed especially for the popular Wireless CPE RouterBoard SXT from MikroTik. NanoBracket SXT enables installation of the Device on wall or pole. It is possible to set the RouterBoard SXT in 90° range by using ball hinge. This system is proven by innumerable installations of other NanoBracket versions over years.

NanoBracket is made of high quality UV stabilized durable ABS plastic. Its material and color match perfectly with the RouterBoard SXT. RouterBoard SXT and the NanoBracket SXT look like one entity after mounting.

NanoBracket™ SXT contains:

NanoBracket™ SXT contains:



- |              |          |            |
|--------------|----------|------------|
| 1 Ball Hinge | 4 Holder | Nuts       |
| 2 U-bolt     | 5 Body   | Saddles    |
| 3 Base       | Screws   | Wall Plugs |

Technical Specification	Dimensions (LxWxH)	Weight
<b>BOX</b>	60 × 60 × 150 mm	167 g
<b>Carton 50pcs</b>	310 × 610 × 160 mm	9,50 kg

<b>Compatible Device</b>	RouterBoard™ SXT from MikroTik
--------------------------	--------------------------------

