

Windows 10 Compatible List

	WLAN AutoConfig	WLAN utility	ALFA WiFi Scanner
AWUS036H	✓	N/A	✓
AWUS036EW	✓	N/A	✓
UBDo-g / UBDo-gt	✓	N/A	✓
Tube-U(G) / Tube-U(G)s	✓	N/A	✓

Window 10 Installation Guide

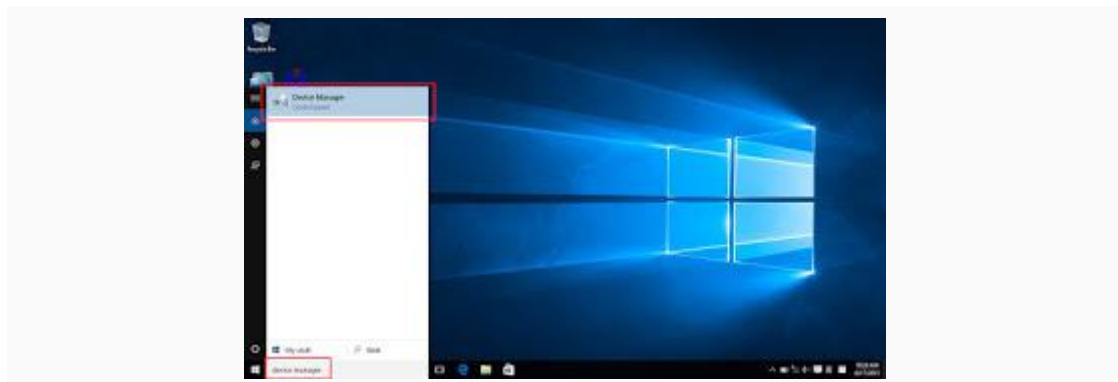
**** Before Plug-in AWUS036H, insert the ALFA driver DVD into DVD-ROM or download the AWUS036H windows 7 from ALFA download website ****

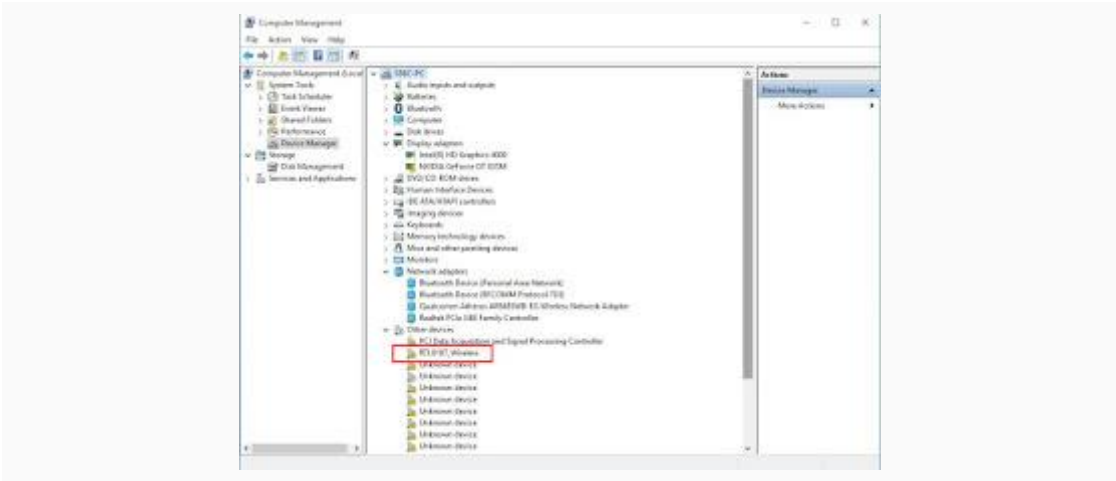
The screenshot shows the ALFA Network website's support page. A search result for 'AWUS036H' is displayed as a table. The first row is highlighted with a red border:

Download	Model	Type	Version	MS5 Hash Value	Date
	AWUS036H	Utility Driver	Windows 7		2013/12/31
	AWUS036H	QIS	English 4	Quick Install Guide	2014/01/29
	AWUS036H	Document	Spanish	Declaration of Confirmation	2014/01/29
	AWUS036H	Driver	Win7	Autopatch power control	2013/11/01
	AWUS036H	Driver	Win8P	Autopatch power control	2013/11/01
	Kit	Firmware	1.3.1.2384	Kit for AWUS036H/Tube-U(G)/UBDo-g series	2013/09/16
	AWUS036H	Database	3.1		2013/11/24
	AWUS036H	Driver	Windows	Win8P(Win7)	2013/08/29
	AWUS036H	Driver	Mac	Mac 10.5 Mac 10.6	2011/11/01
	AWUS036H	Driver	Linux	kernel 2.6.X	2011/11/23
	AWUS036H	Quick Installation Guide	3.1	QIG for Windows	2011/11/01
	AWUS036H	Quick Installation Guide	3.1	QIG for Mac 10.4	2011/11/01

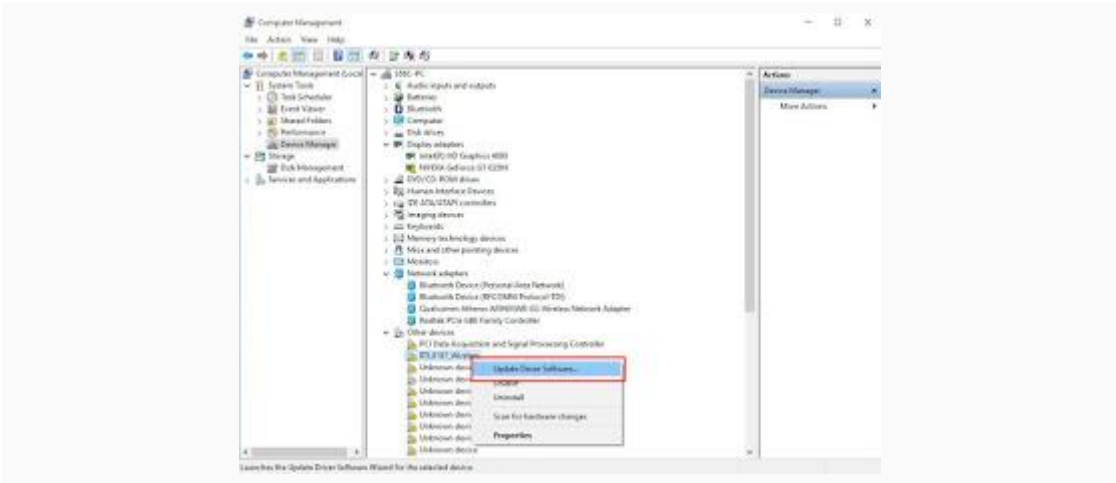
1. After plug-in AWUS036H, go to device manager (type device manger in search bar)

You will find the RTL8187_Wireless in the Other devices list

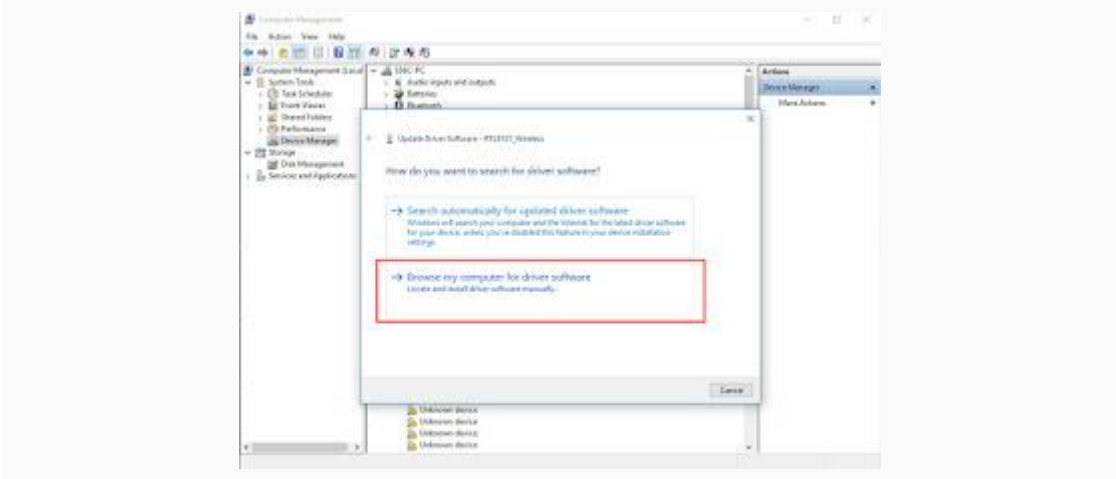




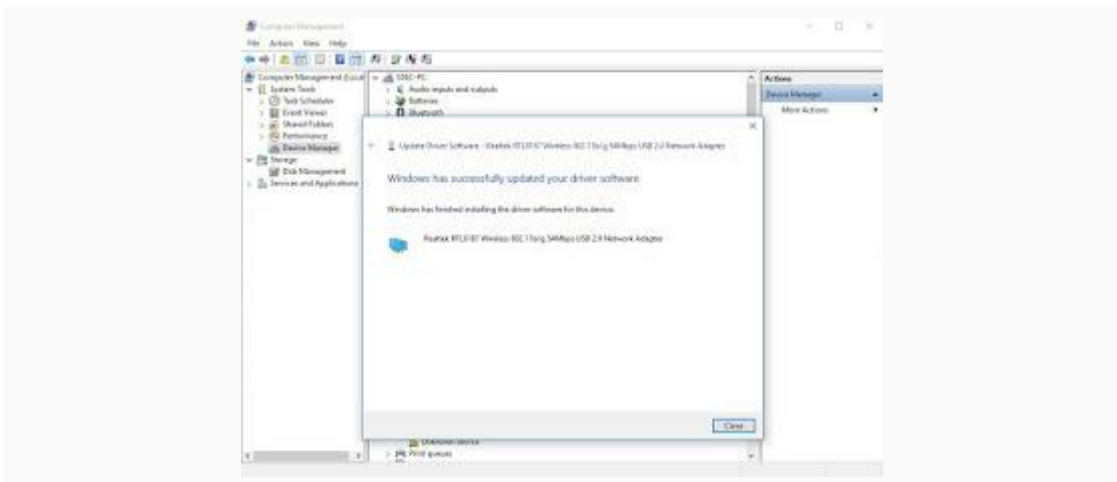
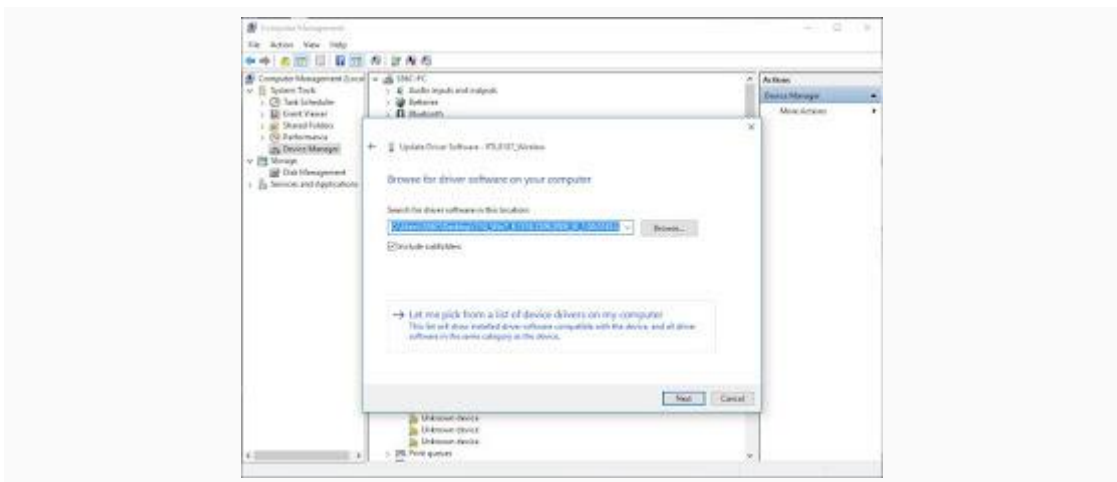
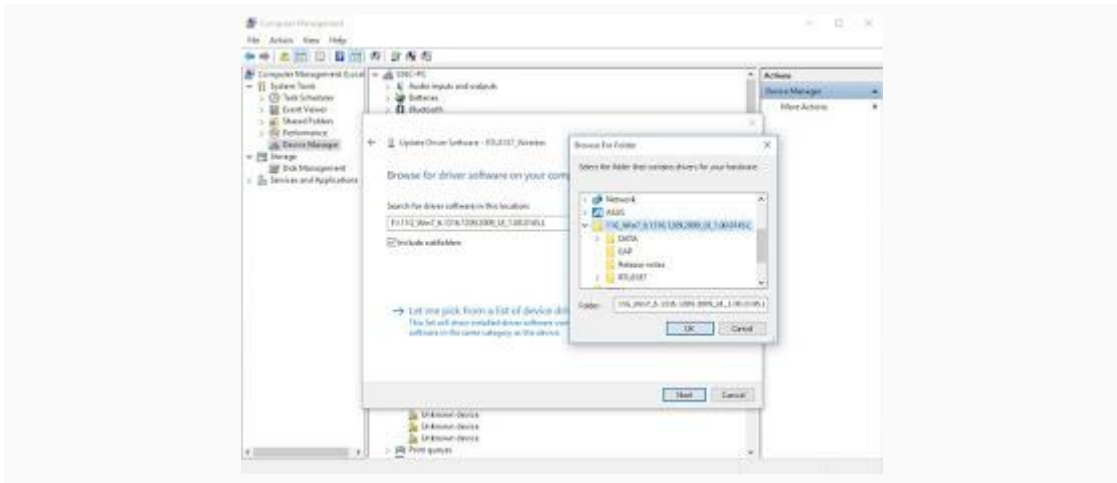
2. Right click the mouse and choose " Update Driver Software"



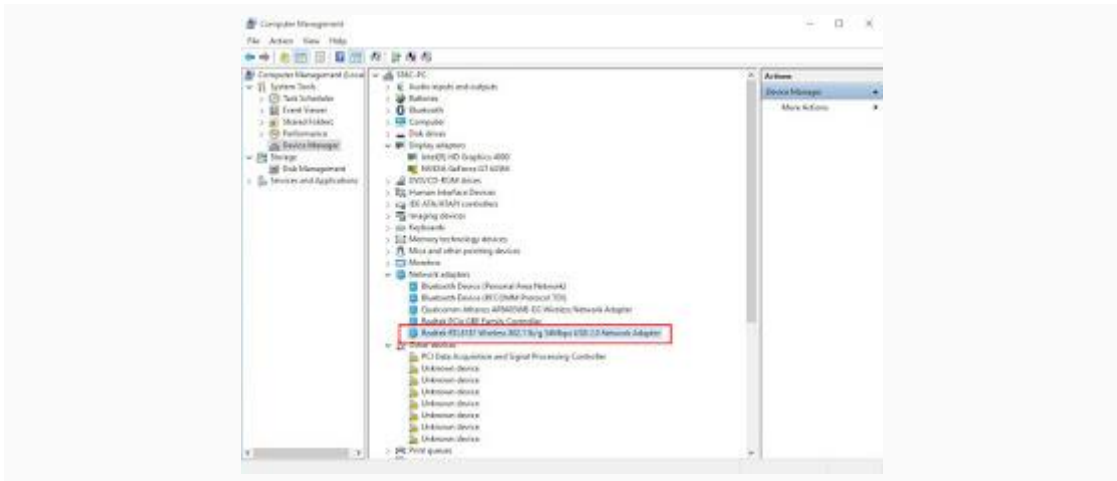
3.Choose "Browse my computer for driver software"



4. Select the AWUS036H windows 7 driver folder and follow steps



5. after driver install successful, you can check the device manager
Realtek RTL8187 wireless adapter in Network adapter list



6. use Windows 10 WiFi connection tool to select your prefer AP and connect

